

Rotational vs Intensive Grazing:

- **What is the difference between them?**
- **What are the benefits?**
- **What are the draw backs?**
- **Which one is for you?**
- **How do you get started?**
- **Available financing?**

The difference?

- More labour intensive
- More infrastructure needed
- Better Nutrient cycling
- Better Utilization of all grasses
- Higher Animal impact
- Which one is easier to manage?

What are the benefits: Rotational

- More room for roping!!!
- Less sickness (☹ for those who don't own 'em)
- Easier to manage for cow/calf herds
- Less fence to check or move
- ?

What are the benefits: Intensive:

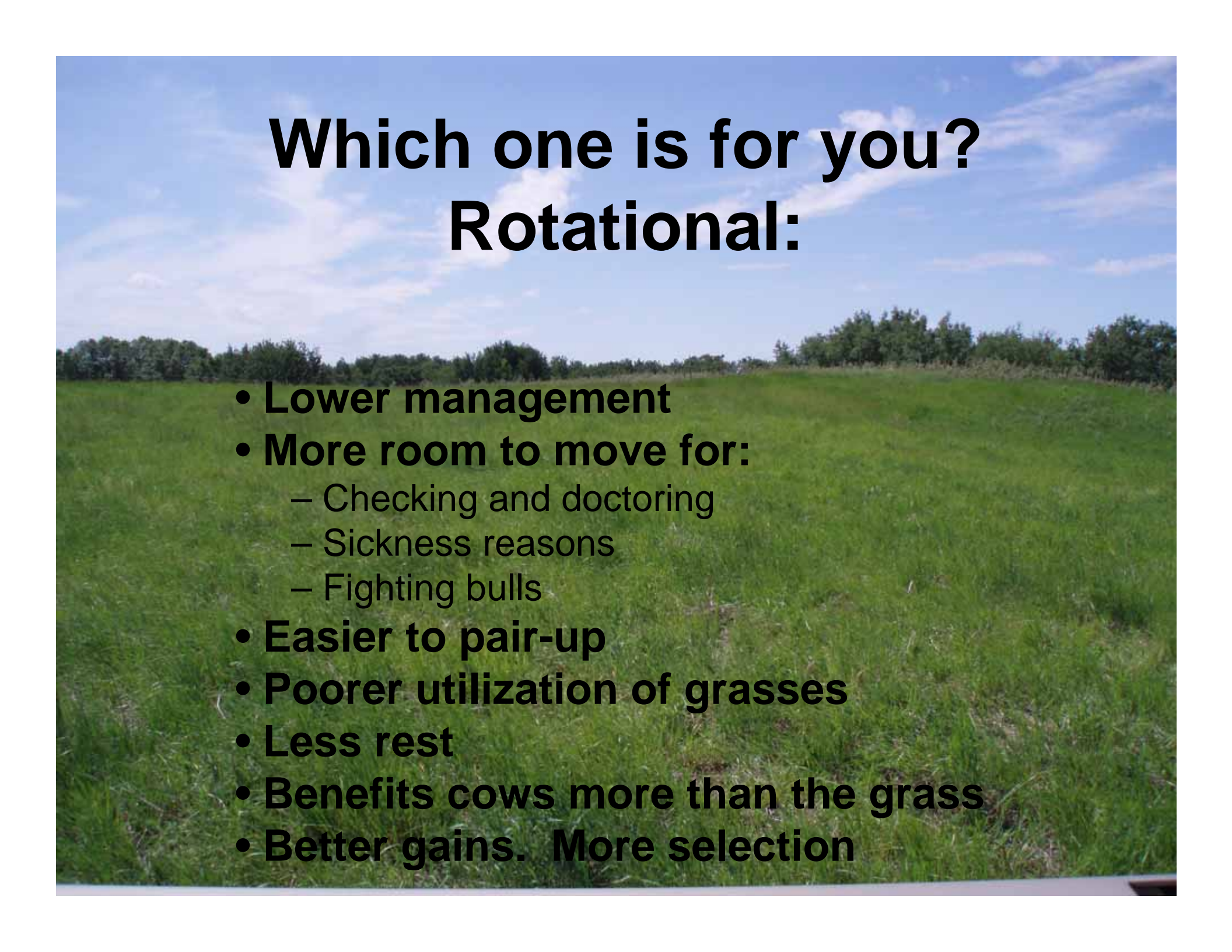
- **Improve nutrient cycling**
- **Better forage Management**
- **More cattle-improved profitability**
- **Improved bio-diversity**
-
-
-

What are the drawbacks: Rotational

- **Poorer grass utilization**
- **Less profitability/acre**
- **The need to see the cattle less**
-
-
-

What are the draw backs: Intensive


- More risk of epidemics
- Tougher to manage pairs
- Less room to rope
- More pressure on fence, and water
-
-



Which one is for you?

Rotational:

- **Lower management**
- **More room to move for:**
 - Checking and doctoring
 - Sickness reasons
 - Fighting bulls
- **Easier to pair-up**
- **Poorer utilization of grasses**
- **Less rest**
- **Benefits cows more than the grass**
- **Better gains. More selection**



Which one is for you: Intensive:

- **Excellent use of grass**
- **More intensive management:**
 - see the cattle and grass more often
 - if properly managed, no need to reseed
- **Most profitable form of grass management.**

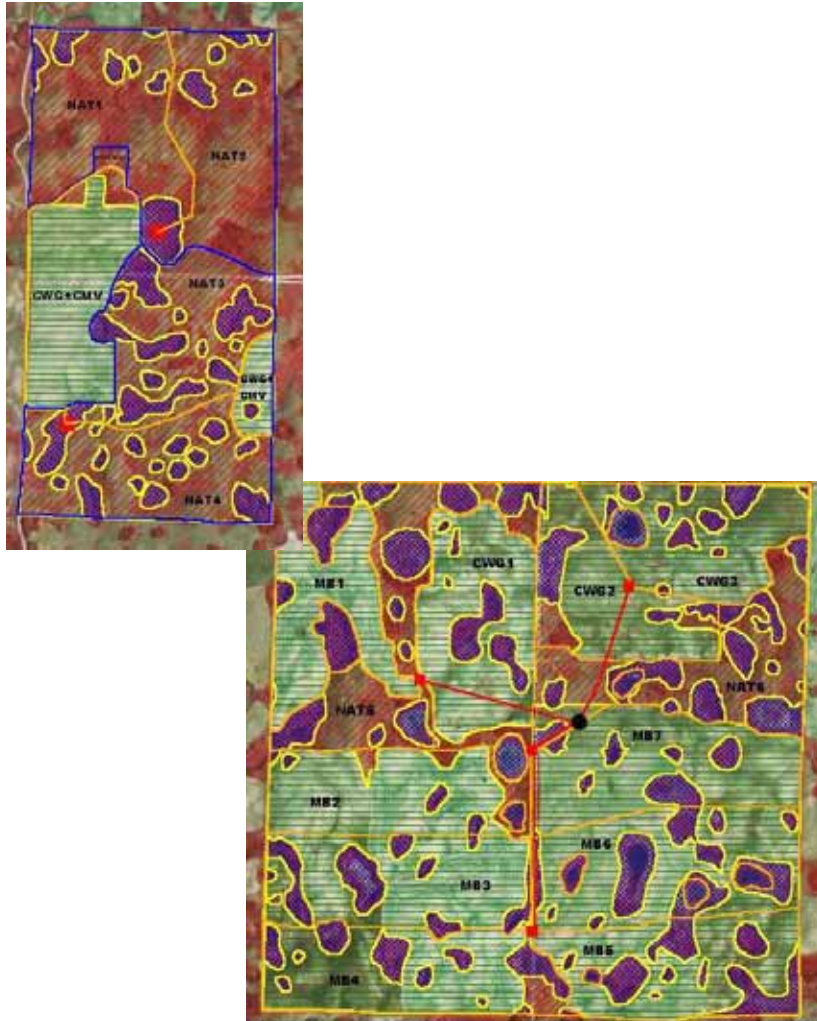
How do you get started:

- Find a mentor in your area
- Aerial photos for planning paddocks
- Plan water sources for each paddock
- Talk to a grass seed pimp on forages best suited to your soil types
- Fences do not have to be straight

Available financing:

- **EFP**
- **DUC**
- **SAF**
- **SWA**
- **Nature Saskatchewan**
- **Rich uncles**

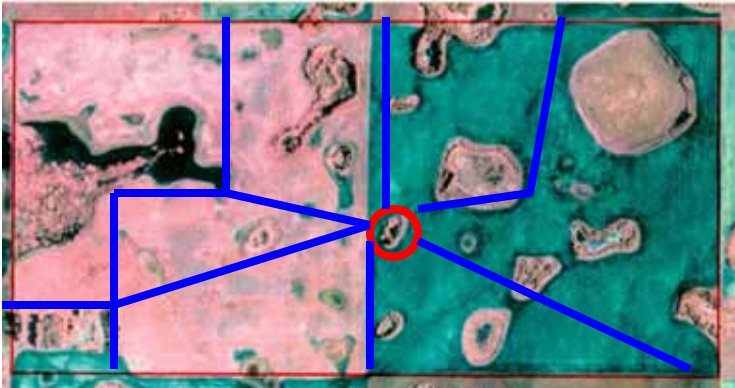
What I do...for 1 system



6 quarters of Deeded Land

- 500 acres of tame pasture seeded in 2001
- 460 acres of native prairie, bush & wetlands
- 7 miles of 2 strand perimeter electric fence
- 7 miles of 1 strand electric cross fence
 - 14 paddocks / cells
- 2 miles of pasture pipeline

What I do...on another system



2 quarters of Rented Land

- 277 acres seeded by Ducks Unlimited Can.
- 43 acres of native prairie, bush & wetlands
- 3 miles of 2 strand perimeter electric fence
- 4 miles of 1 strand electric cross fence
 - 7 paddocks / cells
- Central Watering System

AU Demand Calculator

Class of Animal	Number	Weight	AU's
Heifers	116	700	81
Heifers	121	750	91
Bulls	10	1400	14

Animal Unit Day Calculator based on Pasture Use

Time Frame	# of Days	Animal Units	AU Days	**Notes**
May 19 - June 15	28	172	4815	237 heifers In
June 16 - August 16	62	186	11529	10 Bulls In
August 17 - Sept 20	35	172	6018	10 Bulls Out
Sept 21 - Oct 18	29	163	4737	Remove Opens
Totals	154		27099	

Pasture Supply for Lynn Land

Field	Acres	AUM Rate	AUD Rate	Available AUD's	AUD Demand	Days Grazing
CWG 1	38	1.7	51	1938	176.0	11.0
CWG 2	51	1.7	51	2601	176.0	14.8
CWG 3	56	1.7	51	2856	176.0	16.2
WMB	61	1.6	48	2928	176.0	16.6
SWMB	84	1.6	48	4032	176.0	22.9
EMB	50	1.6	48	2400	176.0	13.6
SEMB	70	1.6	48	3360	176.0	19.1
NWMB	54	1.6	48	2592	176.0	14.7
NEMB	70	1.6	48	3360	176.0	19.1
NAT 1	32	0.8	24	768	176.0	4.4
NAT 2	27	0.8	24	648	176.0	3.7
NAT 3	52	0.8	24	1248	176.0	7.1
S NAT 1	71	0.8	24	1704	176.0	9.7
NCWG	54	1.7	51	2754	176.0	15.7
Total AUD's for Pasture				33189		
Less 15% Drought Protection					28210.65	
Percentage Utilization					96%	

Pasture Utilization & Returns \$!

		Projected	Actual	Actual Stocking Rate		
Field	Acres	Days Grazing	Days Grazing	Animal Unit Months	Gross Return / Acre	Gross Return
CWG 1	38	11.0	11.5	1.73	\$57.38	\$2,180.40
CWG 2	51	14.8	9.5	1.07	\$35.32	\$1,801.20
CWG 3	56	16.2	10	1.02	\$33.86	\$1,896.00
WMB	61	16.6	17	1.60	\$52.84	\$3,223.20
SWMB	84	22.9	17	1.16	\$38.37	\$3,223.20
EMB	50	13.6	13	1.49	\$49.30	\$2,464.80
SEMB	70	19.1	15	1.23	\$40.63	\$2,844.00
NWMB	54	14.7	11	1.17	\$38.62	\$2,085.60
NEMB	70	19.1	11	0.90	\$29.79	\$2,085.60
NAT 1	32	4.4	7	1.25	\$41.48	\$1,327.20
NAT 2	27	3.7	5	1.06	\$35.11	\$948.00
NAT 3	52	7.1	8	0.88	\$29.17	\$1,516.80
S NAT 1	71	9.7	15	1.21	\$40.06	\$2,844.00
NCWG	54	15.7	3	0.32	\$10.53	\$568.80

Watering Sites



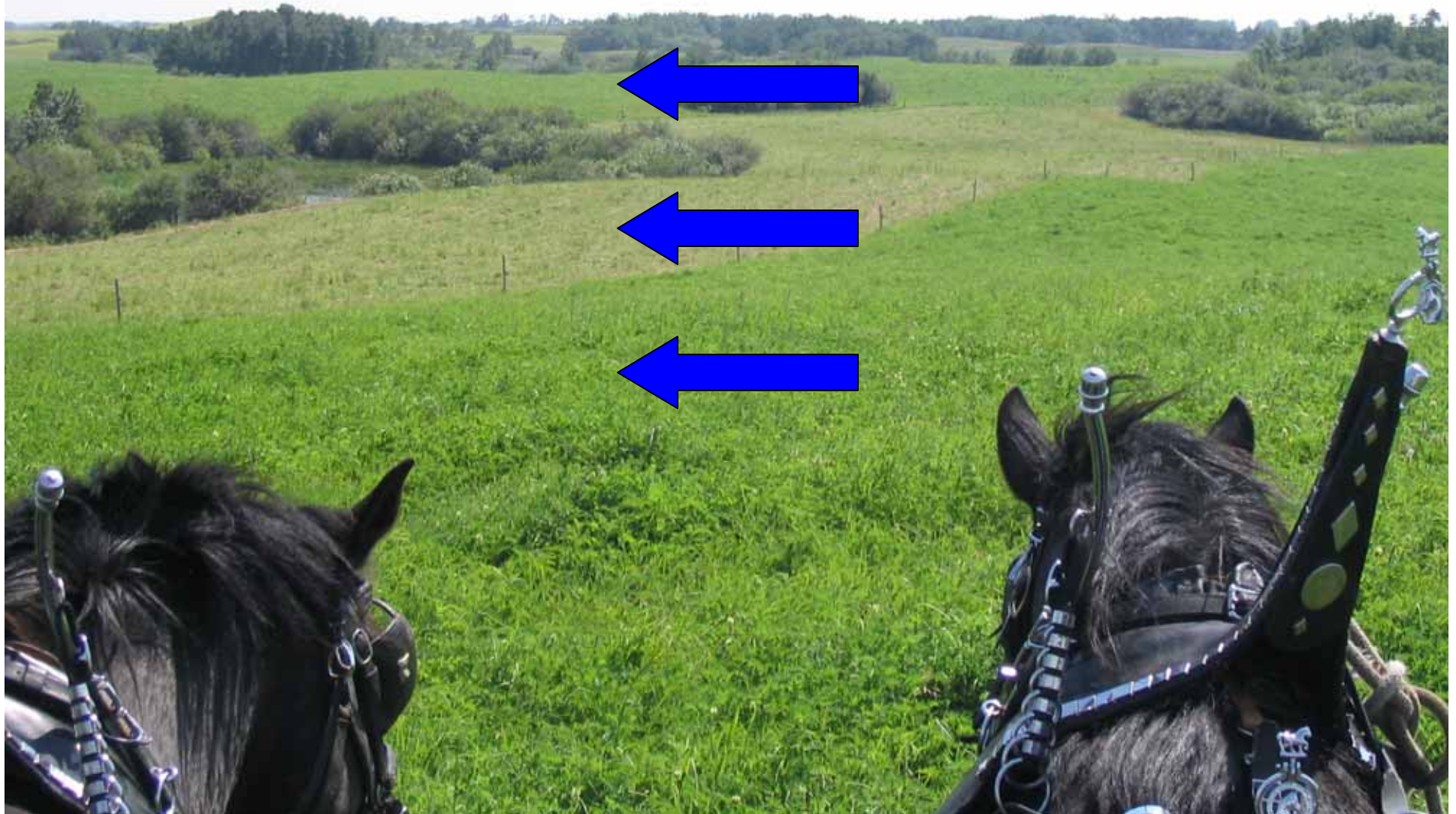
Watering Sites – Lynn Land



Watering Sites – Skaros Land



Cell Grazing Approach













Thank – You!!

**Chad & Carissa Haaland
Box 413 Hanley, Sk.
S0G 2E0 (306)544-2753
Haalandcattle@yahoo.ca**