



Farm Animal Council of Saskatchewan Inc.

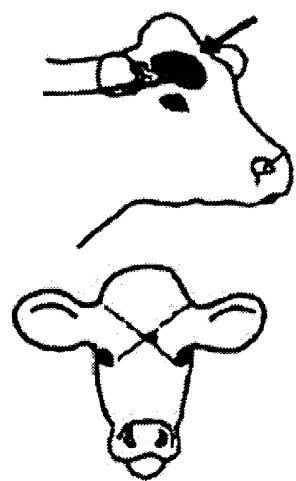
GUIDELINES FOR HUMANE EUTHANASIA OF ANIMALS BY FIREARMS

Gunshot euthanasia procedures for RCMP and other Police Officers or Conservation Officers to follow in case of emergencies to prevent animals with untreatable injuries suffering further serious pain. Adapted from Recommended Code of Practice for the Care and Handling of Farm Animals – Transportation, CARC 2001.

USE AN APPROPRIATE CALIBRE WEAPON

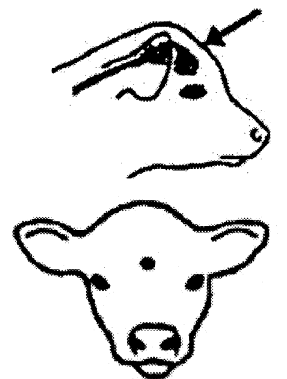
- A large bore shotgun (12 gauge slug or better) or a heavy calibre rifle (.303, .306, .308 or .30/30) is the weapon of choice for large animals (cattle, horses, bison, elk, adult pigs).
- RCMP issue pistols (9 mm) or .22 calibre rifles will only stun large animals but should be adequate at close range for sheep, goats, calves, smaller pigs, llamas and deer.
- Animals, which have been shot dead, may thrash around wildly for some time and people should take caution to avoid injury.
- Animals, which simply drop and do not move, may only be stunned into unconsciousness.

NOTE: Apply standard firearm safety precautions.



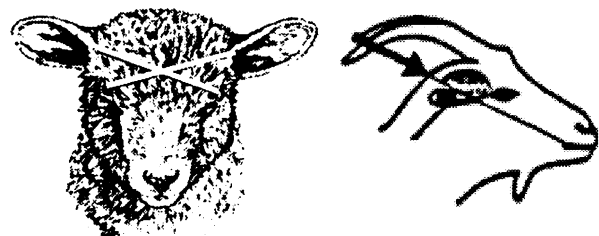
MATURE CATTLE (DAIRY AND BEEF)

With the firearm held at right angles to the skull, aim at a point 2/3 of the way up the forehead at a point intersecting imaginary lines drawn between the back of the ears and the corners of the eyes. The bullet should enter the animal directly from the front, in line with the rest of the animal's body and pitched in line with the slope of the neck.



CALVES (LESS THAN 250 KG.)

The aim of the firearm should be squarely on the midlines of the forehead slightly lower than in mature cattle. The bullet should enter the animal in the centre of the skull between the ears in line with the rest of the animal's body and pitched in line with the slope of the neck.

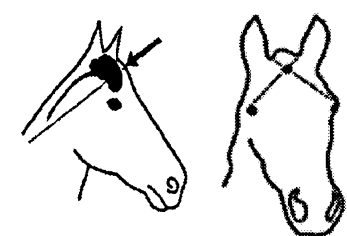
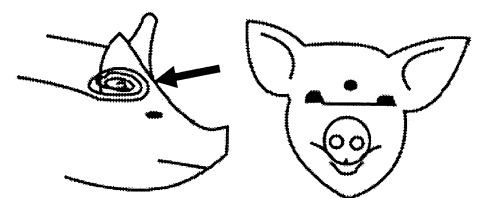


SHEEP AND GOATS

Draw an imaginary X between the centre of the base of the ear and the opposite eye. Shoot the injured sheep or goat as close as possible to where the lines intersect just above the eyes on the midline, shooting towards the spine. If the animals have horns, the approach should be from the rear and the aim directed between the base of the horns towards the mouth.

PIGS

The site of shooting should be well up into the skull. Direct the shot at the midline of the forehead, 2 cm (3/4 inch) or about one finger's width above eye level and discharged 5 to 22 centimetres (2 to 8 3/4 inches) away from the skull. Penetration into the skull is necessary to kill the animal. Wild Boar (very dangerous) are treated as per domestic pigs.



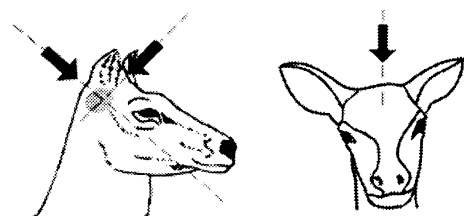
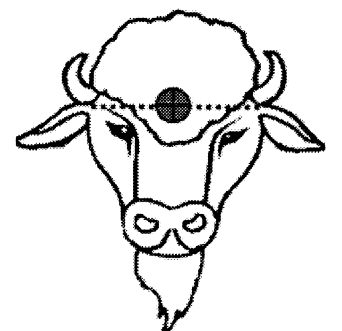
HORSES AND PONIES

The optimal distance from the muzzle of the firearm to the head is 3 to 5 cms (1 1/4 to 2 inches). The bullet should enter the skull at the point **slightly above** where imaginary lines crossing from each eye to the base of the opposite ear intersect. The direction of the shot should be down towards the withers (base of the neck, where the neck meets the back).

BISON

The appropriate location for a killing shot is on the midline of the skull, on a line drawn horizontally across the skull at the location where the base of the horn connects to the side of the skull. The traditional approach of selecting a spot between the eyes is too low.

A heavy calibre rifle (.308, 180 grain load) is adequate at reasonable range, however, a 12-gauge shotgun slug is sufficient at close range. With a mature bull, the rule of thumb is the closer the better, without endangering yourself. If a straight on headshot is not possible then a side shot just under the base of the horn is next best. **RCMP issue pistols are totally inadequate.**



ELK, DEER AND LLAMAS

Euthanise elk, deer and llamas in the same manner as goats or sheep. Aim the firearm from the front just above the eyes on the midline, shooting towards the spine or from the rear with the aim directed between the base of the horns towards the mouth.